

Interdisciplinary Strategic Partnership Tokyo – Zurich

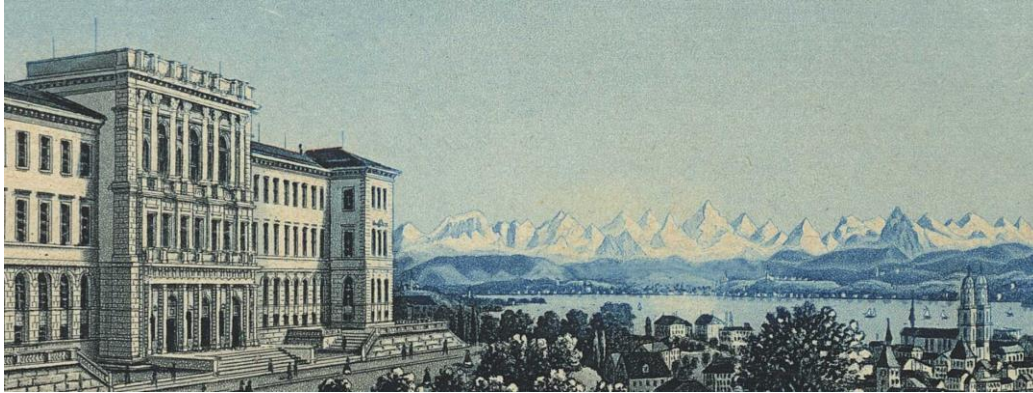
Dr. Cornelia Schauz

Chief of Staff to the Vice President for Research

16 October 2023, Zürich



History and Future of ETH Zurich: Leading the way since 1855



Founded 1855

Today:

16 Departments

~ 25'000 students

~ 550 professors



Masterplan Höggerberg 2040

HPQ – the physics building of the future

Construction 2022-2029

Quantum technologies

ETH Zurich in the Service of Society



Health and Wellbeing & Medicine@ETH



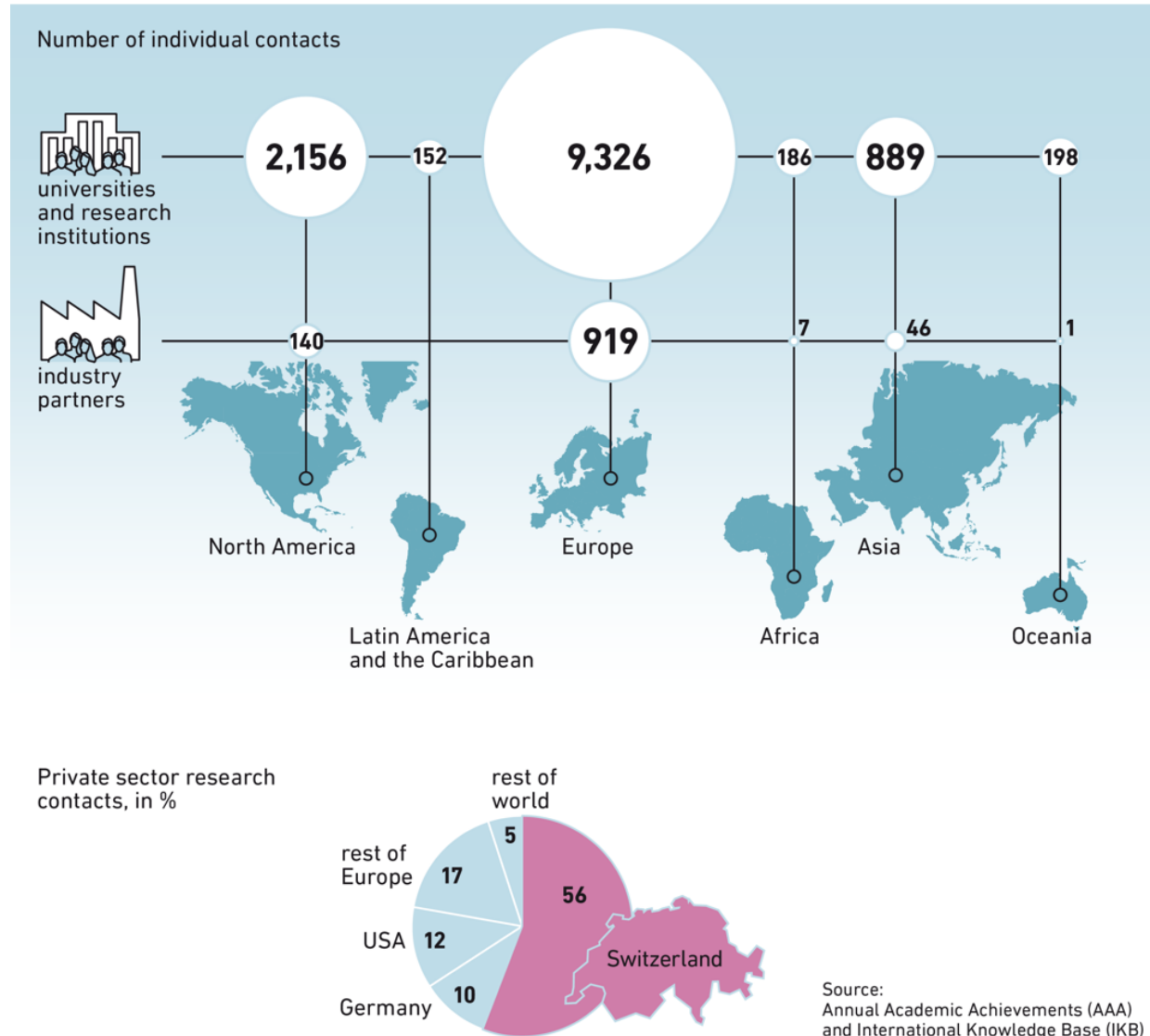
Health and Medicine

- Bachelor course in medicine at ETH since fall 2017
- Technologies are powerful drivers in medicine
- ETH can contribute significantly to this development
- 1/3 of faculty already involved in medical research

Objectives

- Train a new generation of healthcare experts
- Foster interdisciplinary collaboration
- Support digital transformation in medicine
- Develop new solutions for prevention, diagnostics and rehabilitation

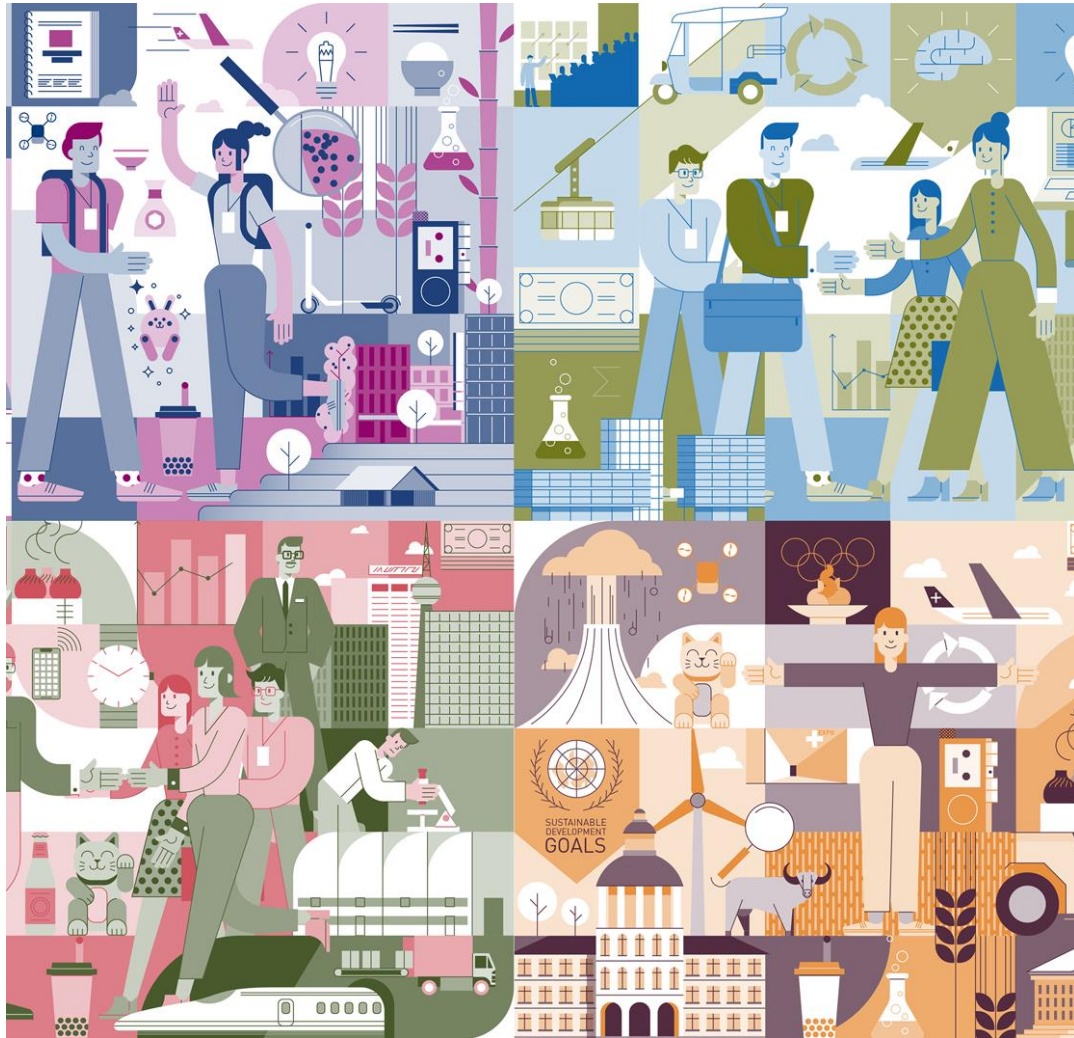
Connected to the world



IARU – International Alliance of Research Universities

- Australian National University
- National University of Singapore
- Peking University
- University of California, Berkeley
- University of Cambridge
- University of Cape Town
- University of Copenhagen
- University of Oxford
- **University of Tokyo**
- Yale University

ETH: Leading House Asia



Mandated by Switzerland's State Secretariat for Education, Research and Innovation (SERI)

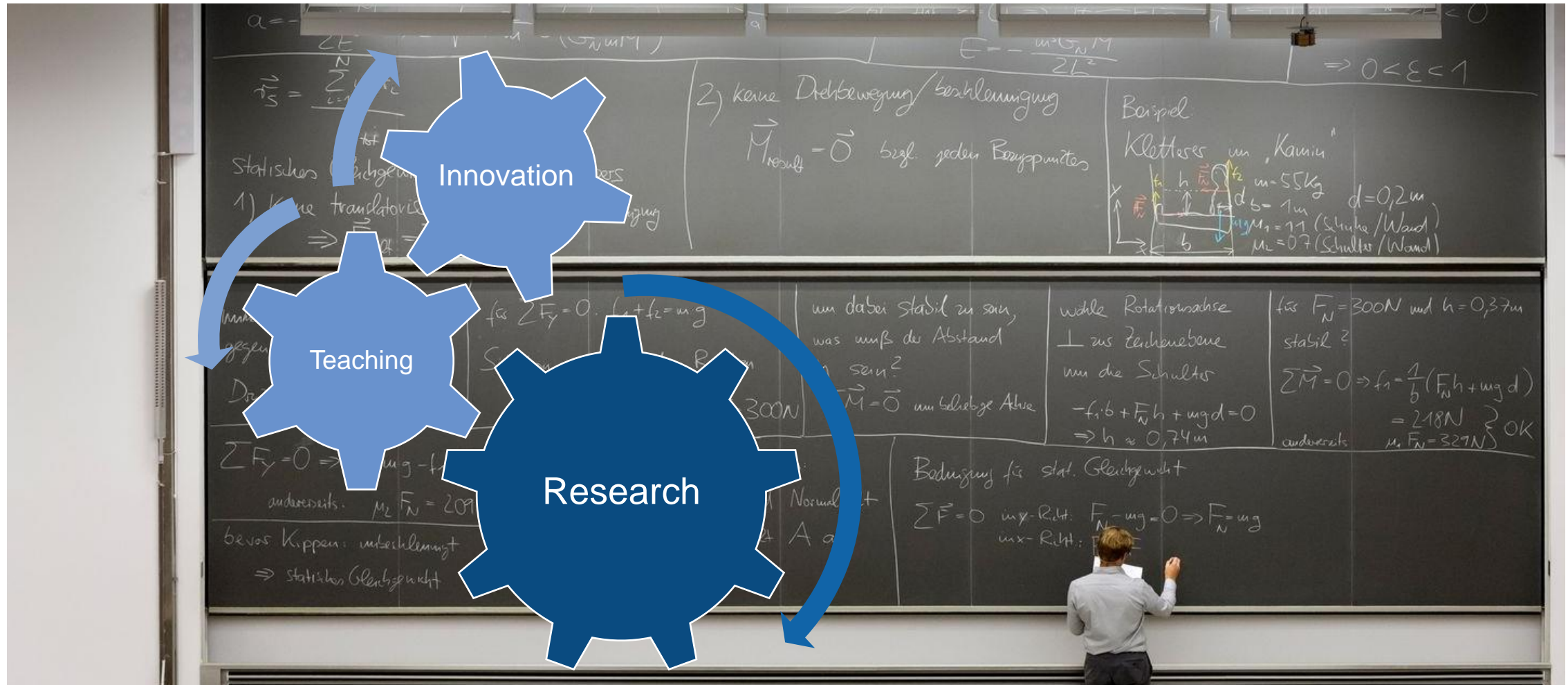
ETH Zurich as Leading House Asia is responsible for the promotion of **collaboration in science and technology** with the East and Southeast Asia region for the funding period 2021–2024.

Funding Instruments

- Mobility Grants
- Research Grants
- Innovation Grants
- Opportunity Grants

Contact person: Anders Hagström,
hagstroem@sl.ethz.ch

Excellence in Research – Education - Innovation



Wolf Prize 2022 to Momoyo Kaijima & Yoshiharu Tsukamoto



“... an architect who appears to move effortlessly between research, education and practical design.”

ETH Zurich
Momoyo Kaijima
Chair of Architectural Behaviorology
since 2017



Dr. Cornelia Schauz
Chief of Staff to the Vice President for Research
cornelia.schauz@sl.ethz.ch

ETH Zürich
Rämistrasse 101
8098 Zürich

www.vpf.ethz.ch